



# McCall Memorial Hospital District

**McCALL MEMORIAL HOSPITAL DISTRICT  
BOARD OF TRUSTEES MONTHLY MEETING  
TUESDAY, JULY 15, 2025; 7:30 am - 9:00 am**  
Administrative Conference Room; 1000 State St. McCall, ID 83638  
For Microsoft Teams Link: [Click here to join the meeting](#)  
Virtual Meeting ID: 252 726 450 726 and Passcode: hS3j9et2  
Phone: 208-996-1717 Conference ID: 926 567 70#

## AGENDA

1. Call to Order – Andy Laidlaw, Chair
2. *ACTION* Approval of the June 17 Meeting Minutes – Andy Laidlaw, Chair
3. *ACTION* Motion to enter Executive Session pursuant to Idaho Code Section 74-206(1)(f):  
To communicate with legal counsel for the public agency to discuss the legal ramifications of and legal options for pending litigation, or controversies not yet being litigated but imminently likely to be litigate.  
– Andy Laidlaw, Board Chair
4. *ACTION* Review Options Relative to Give Us a Vote’s Complaint to the Idaho Attorney General  
– Steve Millemann, MMHD Legal Counsel
5. FY25 Q3 Board Metrics, Attendance, Admin Hours Report Out – Travis Leonard, Secretary
6. Monthly Budget Review – Marge Krahn, Treasurer
7. Quarterly Asset Review – Marge Krahn, Treasurer
8. Housing Workgroup – Andy Laidlaw, Chair  
*ACTION* Approval of the June 18 Meeting Minutes– Andy Laidlaw, Chair  
*ACTION* Approval of Monthly Workforce Housing Project Invoices – Andy Laidlaw, Chair
9. Health Services Agreement Workgroup – Mike Vineyard, Trustee
10. Public Information Campaign – Aana Vannoy, Trustee
  - *ACTION* MMHD Publication Series – Andy Laidlaw, Chair
11. St. Luke’s Reports
  - Ambulance Shelter Update – Ginger McCabe, SLHS VP System Operations
  - Financial Update - Kim Doman, SLHS Finance
  - McCall Operations Report – Amber Green, SLM COO/CNO
  - Population Health Area Report – Dennis Mesaros, VP Population Health
  - Community Board Report – Aana Vannoy
  - Quality Committee Report – Aana Vannoy
  - Foundation Board Report – Marge Krahn, Board Treasurer
12. New Business – Andy Laidlaw, Chair
13. Public Comment – Andy Laidlaw, Chair
14. Adjourn – Andy Laidlaw, Chair

**Upcoming Meetings:**

**Next Board Meeting & Budget Hearing – Tuesday, August 19; 7:30 – 9:00 a.m.**

**MMHD Housing Workgroup Meeting – Monday, August 18; 9:00 – 10:00 a.m.**

**MMHD Public Information Campaign Workgroup Meeting – Wednesday, July 23; 12:30-1:30 p.m.**

**SLM Foundation Board – Wednesday, August 20; 2:00 – 4:00 p.m.**

**SLM Community Board – Thursday, August 28; 7:00 – 9:00 a.m.**

**Quality Committee – Thursday, September 18; 2:00 – 3:00 p.m.**

**SLM Auxiliary Board – Friday, July 25; 10:00 a.m. – 12:00 p.m.**

**McCALL MEMORIAL HOSPITAL DISTRICT  
BOARD OF TRUSTEES MONTHLY MEETING MINUTES  
TUESDAY JUNE 17, 2025; 7:30 – 9:30 a.m.  
ADMINISTRATIVE CONFERENCE ROOM & MICROSOFT TEAMS VIRTUAL MEETING**

**TRUSTEES PRESENT:** Andy Laidlaw, Chair, Travis Leonard, Secretary, Marge Krahn, Treasurer Angela Staup, Mike Vineyard, Aana Vannoy, and Steve Clements, Trustees

**TRUSTEES ABSENT:** None

**STANDING GUESTS:** Christian Anderson, Idaho Housing Authority, Mike Birkinbine, SLM Supply Chain, Laura Crawford SLM PR and Comm. Bus. Partner, Kim Doman, SLHS Finance, Sandee Gehrke, SLHS Sr. VP COO, Amber Green, SLM COO/CNO, Jordan Heller, SLHS Legal Counsel, Jenny Ho, SLHS Exec. Asst., Ginger McCabe, SLHS VP Ops., Dennis Mesaros, VP Pop. Health, Steve Millemann, MMHD Legal Counsel, Jenny Ruemmele, SLM Foundation Dir., Greg Sims, SLHS Finance, and Jason Mau, SLM Foundation Attorney

**PUBLIC PRESENT:** Tomi Grote

**CALL TO ORDER** – A quorum was present and Andy Laidlaw, Chair, convened the meeting at 7:30 a.m. The in-person trustee attendance included: Andy Laidlaw, Chair, Marge Krahn, Treasurer, Travis Leonard, Secretary, Mike Vineyard, Steve Clements and Aana Vannoy, Trustees. In-person guests included: Amber Green and Laura Crawford. All others attended virtually.

**SAFETY TOGETHER MISSION MOMENT** – Amber Green, SLM COO/CNO, presented on the St. Lukes McCall security team and relayed the need for security and the benefit for patient and staff satisfaction and safety. Leadership is working on implementing 24/7 on-campus security.

**APPROVAL OF MINUTES** - Andy Laidlaw, Chair, referred to draft May board meeting minutes

**ACTION: MOVED AANA VANNOY, SECONDED BY MARGE KRAHN, TO APPROVE THE MAY 20, 2025, BOARD MEETING MINUTES, AS PRESENTED. THERE WAS NO DISCUSSION AND IT WAS UNANIMOUSLY APPROVED.**

**MONTHLY BUDGET REVIEW** – Marge Krahn, Treasurer, funds were transferred to maintain FDIC insurance. Bills are expected to begin soon relative to the housing project, and funds are being monitored accordingly.

**APPROVAL OF ASSET DISPOSAL TRANSFER FORM** – Greg Sims, SLHS Finance, presented an asset disposal transfer form and explained the need for the transfer of the asset.

**ACTION: TRAVIS LEONARD MOVED, SECONDED BY STEVE CLEMENTS, TO APPROVE THE ASSET DISPOSAL TRANSFER FORM AS PRESENTED. THERE WAS NO DISCUSSION AND IT WAS UNANIMOUSLY APPROVED.**

**APPROVAL OF DIRECTOR'S AND OFFICER'S INSURANCE** – Travis Leonard, Secretary, presented the newest policy and was reviewed by the board. There were no further comments or questions.

**ACTION: AANA VANNOY MOVED, SECONDED BY MARGE KRAHN, TO APPROVE THE**

**ANNUAL DIRECTOR'S AND OFFICER'S INSURANCE, AS PRESENTED. THERE WAS NO DISCUSSION AND IT WAS UNANIMOUSLY APPROVED.**

**FY26 FUNDING REQUEST** - Amber Green, SLM COO/CNO, presented the proposed levy according to the M&O and Sinking Fund allowed percentages. Marge Krahn, Treasurer, led a discussion on the draft M&O budget, legal services increased in anticipation of the needs of workforce housing project.

**HOUSING WORKGROUP** – Steve Millemann, MMHD Legal Counsel, discussed the Warranty Deed from the Foundation to acquire one half ownership of the workforce housing property. The deed restriction on the workforce housing property was discussed. The property is to be used as housing for St. Luke's McCall health care employees. If unit(s) are available and there is not a St. Luke's McCall employee to occupy the unit, the unit will be opened to other McCall workforce members, as long as they meet the City of McCall's Local Housing criteria.

A discussion on the lease agreement of the proposed lease with the Idaho Health Facilities Authorities (IHFA) was held. It was noted that if future financing was supplied, no tax monies would be allowed to be used to repay the loan. The lease terms are successive ten-year terms and either party has the right to end the lease without cause.

An explanation of Joint Tenants relative to co-ownership on the property was provided. The District will only be committed to funds that are on-hand and available that fiscal year. Undivided ownership may be converted to individual unit ownership in the future.

A discussion on the option agreement was held.

Chairman Andy Laidlaw shared that the Foundation has asked that he act as an owner representative and make regular visits to the construction site. He will keep tabs on the progress and represent MMHD's interest and report back to a joint Workforce Housing workgroup, which will then authorize payment of invoices relative to work being completed. SLM Foundation to pay initial invoices and MMHD will be presented with their portion of the invoice to be approved at their next regular board meeting.

**ACTION: MIKE VINEYARD MOVED, SECONDED BY STEVE CLEMENTS, TO APPROVE THE SPECIAL WARRANTY DEED, AS PRESENTED, AND TO AUTHORIZE THE CHAIRMAN TO EXECUTE THE SPECIAL WARRANTY DEED. THERE WAS NO DISCUSSION AND IT WAS UNANIMOUSLY APPROVED.**

**ACTION: MARGE KRAHN MOVED, SECONDED BY MIKE VINEYARD, TO APPROVE AND EXECUTE THE LEASE AGREEMENT, AS PRESENTED. THERE WAS NO DISCUSSION AND IT WAS UNANIMOUSLY APPROVED.**

**ACTION: TRAVIS LEONARD MOVED, SECONDED BY MARGE KRAHN, TO APPROVE AND EXECUTE THE JOINT TENANCY AGREEMENT, AS PRESENTED. THERE WAS NO DISCUSSION AND IT WAS UNANIMOUSLY APPROVED.**

**ACTION: AANA VANNOY MOVED, SECONDED BY STEVE CLEMENTS, TO APPROVE AND EXECUTE THE OPTION AGREEMENT, AS PRESENTED. THERE WAS NO DISCUSSION AND IT WAS UNANIMOUSLY APPROVED.**

**ACTION: AANA VANNOY MOVED, SECONDED BY MARGE KRAHN, TO APPROVE ANDY LAIDLAW TO SERVE AN OWNER'S REPRESENTATIVE. THERE WAS NO**

**DISCUSSION AND IT WAS UNANIMOUSLY APPROVED.**

**ACTION: AANA VANNOY MOVED, SECONDED BY MARGE KRAHN, TO APPROVE THE CONSTRUCTION PAYMENT METHODOLOGY, AS PRESENTED. THERE WAS NO DISCUSSION AND IT WAS UNANIMOUSLY APPROVED.**

**HEALTH SERVICES AGREEMENT WORKGROUP** - Mike Vineyard, Trustee, led a discussion on the Give Us a Vote movement and their plan to file a request for legal review and possible constitutional and statutory violations by MMHD with the Idaho Attorney General. Steve Clements presented on the advisory vote and the dissolution by petition process and timeline. .

**ACTION: MIKE VINEYARD MOVED, SECONDED BY STEVE CLEMENTS, TO APPROVE THE JUNE 4, 2025, HEALTH SERVICES AGREEMENT WORKGROUP MEETING MINUTES, AS PRESENTED. THERE WAS NO DISCUSSION AND IT WAS UNANIMOUSLY APPROVED.**

**PUBLIC INFORMATION CAMPAIGN WORKGROUP** – Aana Vannoy, Trustee, reported that assignments have been given on the FAQs. A draft will be presented and discussed to the board soon. The workgroup is organizing potential presentation material to be used with civic groups.

**ACTION: MARGE KRAHN MOVED, SECONDED BY AANA VANNOY , TO APPROVE THE JUNE 5, 2025, PUBLIC INFORMATION CAMPAIGN WORKGROUP MEETING MINUTES, AS PRESENTED. THERE WAS NO DISCUSSION AND IT WAS UNANIMOUSLY APPROVED.**

**GIVE US A VOTE – UPDATE ON THE IDAHO ATTORNEY GENERAL COMPLAINT SUBMISSION** – Andy Laidlaw, Chair & Steve Millemann, MMHD Legal Counsel led a discussion on the request and how it is factually inaccurate and without legal merit. Discussions with the Idaho Attorney General (AG) are welcome if the AG has concerns. The District should hear from the AG’s office and enter into a discussion relative to their concerns and discuss any pertinent facts. It was decided to have legal counsel draft a response to the AG filing and present it to the board.

**ACTION: AANA VANNOY MOVED, SECONDED BY MARGE KRAHN, TO HAVE LEGAL COUNCIL DRAFT A RESPONSE TO THE COMPLAINT FILED BY THE GUV MOVEMENT WITH THE ATTORNEY GENERAL’S OFFICE. THERE WAS NO DISCUSSION AND IT WAS UNANIMOUSLY APPROVED.**

#### **ST. LUKE’S REPORTS**

**AMBULANCE SHELTER UPDATE** – Ginger McCabe, SLHS VP System Operations, noted there have been a few delays, due to weather, but the ambulance shelter project is on track.

**FINANCIAL UPDATE** – Kim Doman, SLHS Finance, provided a financial update.

**ST. LUKE’S McCALL OPERATIONS REPORT** – Amber Green, SLM COO/CNO, provided an operational update regarding staffing and preparation for the busy summer season. She presented on new services and on-call coverage for services.

**POPULATION HEALTH REPORT** – Dennis Mesaros, SLHS VP Population Health, reported that the Air St. Lukes ambulance hit an elk on HWY 55. There was minor vehicle damage only. Dennis reported on access to care and the successful on-demand virtual visits. He commented on legislation updates relative to Medicaid.

**SLM COMMUNITY BOARD, SLM QUALITY COMMITTEE, FOUNDATION BOARD** – No updates.

**NEW BUSINESS** – A discussion was held to change the posted meeting times to reflect the recent longer meeting. Decided to change regular time to 7:30-9:00.

**PUBLIC COMMENT** – No comments.

Hearing no other comments or updates, the board adjourned at 9:30 a.m.

Respectfully submitted,

---

Travis Leonard, MMHD Board Secretary

DRAFT

Met

Not Met

Key Activity Metrics

| Dashboard  | Deadline  | Target  | Reference: ID Code, Agreement, County | Responsible Party   |
|--|---|---|---------------------------------------|---|
| Capital Improvement Plan   | Included monthly in each board meeting operational report | A mutually acceptable Plan is to be adopted and added as Exhibit A.22 (b) by April 5, 2025  | Agreement                             | SLHS Finance  |
| Provide notification to Valley County on meeting dates for 2025  | 12/31/24  | Provide notification by December 31, 2025   | County                                | Secretary   |
| Post public notice to The Star-News for 2025 meeting dates.  | 12/31/24  | Publish meeting dates by December 31, 2025  | County                                | Secretary   |
| Statement of Rent  | 1/21/25   | SLM is to provide the Board with a "Statement of Rent" by November 1 annually. This is a quantification of the expenditures made by SLM in the prior year in satisfaction of Section A.3 (a) of the Lease-Option.             | Agreement                             | SLHS Finance  |
| Review of Annual Asset Disposal Listing.   | 1/21/25   | Requested by auditors   | Auditors                              | SLM Finance & Lamm CPA  |
| Cause audit to be made and certified by an independent auditor (of all financial affairs of the district) within 120 days following end of fiscal year (approximately the end of January). | 2/18/25   | Complete audit by January 31, 2025  | ID Code                               | Lamm CPA / Bailey & Co.   |
| Cause financial statement to be published in newspaper one time, no more than 30 days after completion of audit.   | Ran in 3/6/25 Star News issue                             | Publish certified financial statement within 30 days of completion of audit.  | ID Code                               | Lamm CPA / Bailey & Co.   |
| File notification of the date for the hospital district public budget hearing with Valley County by the end of April.  | 4/30/25   | Per ID Code: 63-802A, notify Valley County of public budget hearing date by 4/30/25.  | County                                | Secretary   |
| By Idaho Code Section 39-1347, the budget compliance restricts the expenditures of the district to the amount of the budget appropriation.   | 6/1/25  | Amend Budget if needed prior to the close of the fiscal year, June 1. If the budget changes, Lamm CPA needs to update the State Registry reporting prior to June 1, 2025.   | ID Code: 39-1347                      | Lamm CPA  |
| SLM Request for Funding  | 6/17/25   | From the HSA, "A request for funding shall be delivered to the District by no later than June 1 annually, or such other date as mutually agreed to by the Parties, for funding to be provided in the subsequent fiscal year." | Agreement                             | MMHD Legal  |
| SLM Annual Budget  | 8/19/2025   | To be submitted to the District by July 1 annually. Information only. No formal action required.  | Agreement                             | SLHS Finance  |
| Provide public notice with proposed budget information two weeks prior to budget hearing meeting.  | July 28 deadline to the Star News                         | Provide public notice for budget hearing two weeks before the week of meeting.  | ID Code: 63-802A                      | Secretary to Arrange Meeting Date and County notification. Lamm CPA to work with Bailey and Co. |
| Certify taxing rate to the county board of commissioners by beginning of September at the time and manner designated for purpose of levying such taxes (via L-2 document).                 | August Budget Hearing to be held 8/19/25.                 | Deliver the required L-2 forms/taxing rate certification to Valley County before 9/1/25   | ID Code                               | L2 prepared by Lamm CPA   |
| Following Approval of the Sole Source Procurement, within 14 days of the funding request submission, to be publicly noticed in the Star News newspaper.                                    | 2 weeks after August Budget Hearing Approval              | Scheduled quarterly for:  | Agreement                             | MMHD Legal produces resolution, Secretary to Notice in Paper within 14 days of resolution       |
| Conduct an Annual meeting of the Board, including election of officers, designation of SLM committee member, and determination of regular meeting dates for the fiscal year.               | MMHD Board Meeting: 9/16/2025                             | Conduct Annual Hospital Dist. Bd. meeting in September; FY26 officers current for 2 years; liaisons and committee members are voted on.   | Bylaws                                | Board Action  |

|   |   |  |                 |   |
|---|---|--|-----------------|---|
| Per ID Code Section 67-450E, all local governing entities are required to register through the portal and provide administrative and financial information. | Before 12/1/2025  | Completed by Lamm CPA  | State Reporting | Lamm CPA                                  |
| <b>Additional Measures pertaining to District Board elections held in odd numbered years</b>  |   |  |                 |   |
| Cause notification to be provided to the County (early March every other year in odd numbered years) naming trustees whose terms are expiring that year.    | 11/30/25  | Provide Valley County names of Trustees w/expiring terms/filling replacement terms by TBD by County  | County          | Secretary                                 |
| Hold election, if appropriate, and seat successful candidates on the hospital district board no later than June meeting.                                    | Valley County Will Hold Election in May 2025                                  | Seat successful candidates/by June meeting of election year.   | ID Code         | Valley County holds ballots for election. |
| <b>Key Process Metrics</b>  |   |  |                 |   |
| Provide for and support process for transfer of levy funds to SLM as outlined in the Health Services Agreement.   | The board agreed to hold FY25 in full board meetings.                         | The board requested that SLM Admin present funding opportunities first to the full board, and if needed will engage the Funding Request Workgroup. |                 |   |
| Utilize opportunities to address public questions/concerns.   |   | Will hold public budget hearing and have address public inquiries in 2025. Have restarted Health Services Agreement workgroup 4/1/25.              |                 |   |
| Review Asset Disposals Quarterly  | Jan, April, July, Oct   | On the April, July, and October agendas. Missed the January opportunity as audit was presented in February 2025.                                   |                 |   |
| Achieve 80% attendance at board and committee meetings. To be reviewed quarterly in the months: January, April, July, and October                           | Board Mtgs=80%<br>Workgroups:<br>Housing=80%<br>Public Info = 75%<br>HAS= 83% | On the January, April, July, and October agendas   |                 |   |

# DISTRICT BOARD ATTENDANCE

| FY 2025   | OCT | NOV | DEC | JAN | FEB                         | MAR | APR | MAY | MAY | JUN        | JUL | AUG | SEP | Total |
|---|-----|-----|-----|-----|-----------------------------|-----|-----|-----|-----|------------|-----|-----|-----|-------|
|   | 15  | 19  | 17  | 21  | 18                          | 18  | 15  | 16  | 20  | 17         | 15  | 19  | 16  |       |
| <b>District Board</b>                             |     |     |     |     |                             |     |     |     |     |            |     |     |     |       |
| Steve Clements                                    | 1   | 1   | 1   | 1   | 1                           | 1   | 0   | 1   | 1   | 1          |     |     |     | 9     |
| Marge Krahn                                       | 1   | 1   | 1   | 1   | 1                           | 0   | 1   | 1   | 1   | 1          |     |     |     | 9     |
| Andy Laidlaw                                      | 1   | 1   | 1   | 1   | 1                           | 0   | 1   | 1   | 1   | 1          |     |     |     | 9     |
| Travis Leonard                                    | 0   | 1   | 0   | 0   | 1                           | 0   | 1   | 0   | 1   | 1          |     |     |     | 5     |
| Angela Staup                                      | 1   | 0   | 1   | 1   | 1                           | 1   | 1   | 1   | 1   | 1          |     |     |     | 9     |
| Mike Vineyard                                     | 0   | 1   | 1   | 0   | 1                           | 1   | 1   | 1   | 1   | 1          |     |     |     | 8     |
| Aana Vannoy                                       | 0   | 1   | 1   | 1   | 1                           | 1   | 1   | 1   | 1   | 1          |     |     |     | 9     |
| Green indicates member joined via conference call |     |     |     |     | 3rd Quarter Attendance: 83% |     |     |     |     | Goal = 80% |     | 58  |     |       |
| Board Total for Year                              |     |     |     |     |                             |     |     |     |     |            |     |     |     |       |
| <b>Other Attendees</b>                            |     |     |     |     |                             |     |     |     |     |            |     |     |     |       |
| Christian Anderson                                | 0   | 0   | 1   | 0   | 0                           | 0   | 0   | 0   | 0   | 1          |     |     |     | 2     |
| Zach Armstrong                                    | 0   | 0   | 0   | 0   | 1                           | 0   | 0   | 0   | 0   | 0          |     |     |     | 1     |
| Maureen Arnold                                    | 0   | 0   | 0   | 0   | 1                           | 0   | 0   | 0   | 0   | 0          |     |     |     | 1     |
| Mike Birkinbine                                   | 1   | 1   | 1   | 1   | 1                           | 1   | 1   | 0   | 1   | 1          |     |     |     | 9     |
| Bill Colpo  | 0   | 0   | 0   | 0   | 1                           | 0   | 1   | 0   | 0   | 0          |     |     |     | 2     |
| Laura Crawford                                    | 1   | 1   | 1   | 1   | 1                           | 1   | 1   | 1   | 1   | 1          |     |     |     | 10    |
| Dr. Sarah Curtin                                  | 0   | 0   | 0   | 0   | 1                           | 0   | 0   | 0   | 0   | 0          |     |     |     | 1     |
| Drew Dodson                                       | 0   | 0   | 0   | 0   | 1                           | 0   | 0   | 0   | 0   | 0          |     |     |     | 1     |
| Kim Doman   | 1   | 0   | 1   | 1   | 1                           | 1   | 1   | 1   | 1   | 1          |     |     |     | 9     |
| Hannah Drabinski                                  | 0   | 0   | 0   | 0   | 1                           | 0   | 0   | 0   | 0   | 0          |     |     |     | 1     |
| Ron Erskine                                       | 0   | 0   | 0   | 0   | 1                           | 0   | 0   | 0   | 0   | 0          |     |     |     | 1     |
| Sandee Gehrke                                     | 0   | 1   | 0   | 0   | 1                           | 0   | 1   | 1   | 1   | 1          |     |     |     | 6     |
| Beth Gray   | 0   | 0   | 0   | 0   | 1                           | 0   | 0   | 0   | 0   | 0          |     |     |     | 1     |
| Amber Green                                       | 1   | 1   | 1   | 1   | 1                           | 1   | 1   | 1   | 1   | 1          |     |     |     | 10    |
| Tom Grote   | 0   | 0   | 0   | 0   | 1                           | 1   | 1   | 1   | 1   | 1          |     |     |     | 6     |
| Tomi Grote  | 0   | 0   | 0   | 0   | 1                           | 1   | 1   | 1   | 1   | 1          |     |     |     | 6     |
| Krystle Grothjan                                  | 0   | 1   | 0   | 0   | 1                           | 0   | 0   | 0   | 0   | 0          |     |     |     | 2     |
| Michelle Harris                                   | 0   | 0   | 0   | 1   | 0                           | 0   | 0   | 0   | 0   | 0          |     |     |     | 1     |
| Megan Hatt  | 0   | 0   | 1   | 0   | 0                           | 0   | 0   | 0   | 0   | 0          |     |     |     | 1     |
| Jordan Heller                                     | 1   | 1   | 1   | 1   | 0                           | 0   | 1   | 1   | 1   | 1          |     |     |     | 8     |
| Alexa Hersel                                      | 1   | 1   | 1   | 0   | 1                           | 1   | 1   | 1   | 1   | 0          |     |     |     | 8     |
| Dr. Greg Irvine                                   | 0   | 0   | 0   | 0   | 1                           | 0   | 0   | 0   | 0   | 0          |     |     |     | 1     |
| Hayley Johnson                                    | 0   | 0   | 0   | 0   | 1                           | 0   | 0   | 1   | 1   | 0          |     |     |     | 3     |
| Karen Kellie                                      | 0   | 0   | 0   | 0   | 1                           | 0   | 0   | 0   | 0   | 0          |     |     |     | 1     |
| Gusti Laidlaw                                     | 0   | 0   | 0   | 0   | 1                           | 0   | 0   | 0   | 0   | 0          |     |     |     | 1     |
| Ginger McCabe                                     | 1   | 1   | 1   | 1   | 1                           | 1   | 1   | 0   | 1   | 1          |     |     |     | 9     |
| Jason Mau   | 0   | 0   | 1   | 0   | 0                           | 0   | 0   | 0   | 0   | 1          |     |     |     | 2     |
| Dennis Mesaros                                    | 1   | 1   | 1   | 1   | 1                           | 1   | 1   | 1   | 1   | 1          |     |     |     | 10    |
| Steve Millemann                                   | 0   | 1   | 1   | 0   | 1                           | 0   | 0   | 1   | 0   | 1          |     |     |     | 5     |

|                               |   |   |   |   |   |   |   |   |   |   |  |  |  |   |
|-------------------------------|---|---|---|---|---|---|---|---|---|---|--|--|--|---|
| Jennifer Nevala               | 0 | 0 | 0 | 0 | 0 | 0 | 0 | 0 | 0 | 0 |  |  |  | 0 |
| Deb Rio                       | 0 | 1 | 0 | 0 | 1 | 0 | 0 | 0 | 0 | 0 |  |  |  | 2 |
| Jenny Ruemmele                | 0 | 0 | 0 | 0 | 1 | 0 | 1 | 0 | 0 | 1 |  |  |  | 3 |
| Ray Schmitz                   | 0 | 0 | 0 | 0 | 1 | 0 | 0 | 0 | 0 | 0 |  |  |  | 1 |
| Kim Schwisow                  | 0 | 0 | 0 | 0 | 0 | 1 | 0 | 0 | 0 | 0 |  |  |  | 1 |
| Larry Shake                   | 0 | 0 | 0 | 0 | 0 | 1 | 0 | 0 | 0 | 0 |  |  |  | 1 |
| Max Silverson                 | 0 | 0 | 0 | 0 | 1 | 1 | 1 | 0 | 0 | 0 |  |  |  | 3 |
| Greg Sims                     | 0 | 1 | 1 | 1 | 1 | 1 | 1 | 1 | 1 | 1 |  |  |  | 9 |
| Debra Staup                   | 0 | 0 | 0 | 0 | 1 | 0 | 0 | 0 | 0 | 0 |  |  |  | 1 |
| Mike Stoddard                 | 0 | 0 | 1 | 0 | 0 | 0 | 0 | 0 | 0 | 1 |  |  |  | 2 |
| Kaley Turpen                  | 0 | 0 | 0 | 0 | 0 | 0 | 1 | 0 | 0 | 0 |  |  |  | 1 |
| Verna Vanis                   | 0 | 0 | 0 | 0 | 1 | 0 | 0 | 0 | 0 | 0 |  |  |  | 1 |
| April Whitney                 | 0 | 0 | 0 | 0 | 1 | 0 | 0 | 0 | 0 | 0 |  |  |  | 1 |
| Maureen O'Keefe-Wing          | 0 | 0 | 0 | 0 | 1 | 0 | 0 | 0 | 0 | 0 |  |  |  | 1 |
| Cassie Zattiero, Bailey & Co. | 0 | 0 | 0 | 0 | 1 | 0 | 0 | 0 | 0 | 0 |  |  |  | 1 |





## DISTRICT BOARD HOUSING WORKGROUP ATTENDANCE FY25

| FY 2025   | Oct | Nov | Nov | Dec | Dec   | Jan | Jan | Feb | Feb | Mar | Mar | Apr | Apr | May | May | Jun | Jul |    |   |
|---|-----|-----|-----|-----|---|-----|-----|-----|-----|-----|-----|-----|-----|-----|-----|-----|-----|----|---|
|   | 2   | 6   | 20  | 4   | 18  | 1   | 15  | 5   | 19  | 2   | 19  | 2   | 16  | 7   | 21  | 18  | 14  |    |   |
| <b>MMHD Trustees:</b>   |     |     |     |     |   |     |     |     |     |     |     |     |     |     |     |     |     |    |   |
| Marge Krahn   | 1   | 1   | 1   | 1   | The meetings held in December-May were cancelled.   |     |     |     |     |     |     |     |     |     |     |     | 1   |    | 5 |
| Andy Laidlaw  | 1   | 1   | 1   | 1   |   |     |     |     |     |     |     |     |     |     |     |     | 0   |    | 4 |
| Mike Vineyard   | 1   | 1   | 0   | 1   |   |     |     |     |     |     |     |     |     |     |     |     | 0   |    | 3 |
| Green indicates member joined via conference call                                   |     |     |     |     |   |     |     |     |     |     |     |     |     |     |     |     |     | 12 |   |
| Board Total for Year <span style="float: right;">3rd Quarter Attendance: 80%</span> |     |     |     |     |   |     |     |     |     |     |     |     |     |     |     |     |     |    |   |
| <b>Other Attendees</b>  |     |     |     |     |   |     |     |     |     |     |     |     |     |     |     |     |     |    |   |
| Bill Colpo  | 1   | 1   | 1   | 0   | The meetings held in December-March were cancelled. |     |     |     |     |     |     |     |     |     |     |     | 0   |    | 3 |
| Laura Crawford  | 1   | 1   | 1   | 1   |   |     |     |     |     |     |     |     |     |     |     |     | 1   |    | 5 |
| Dr. Eddie Droge   | 1   | 1   | 1   | 1   |   |     |     |     |     |     |     |     |     |     |     |     | 1   |    | 5 |
| Amber Green   | 1   | 1   | 1   | 1   |   |     |     |     |     |     |     |     |     |     |     |     | 1   |    | 5 |
| Jordan Heller   | 1   | 1   | 0   | 1   |   |     |     |     |     |     |     |     |     |     |     |     | 1   |    | 4 |
| Alexa Hersel  | 0   | 1   | 1   | 1   |   |     |     |     |     |     |     |     |     |     |     |     | 1   |    | 3 |
| Hayley Johnson  | 0   | 0   | 0   | 1   |   |     |     |     |     |     |     |     |     |     |     |     | 1   |    | 2 |
| Steve Millemann   | 1   | 1   | 1   | 0   |   |     |     |     |     |     |     |     |     |     |     |     | 1   |    | 3 |
| Carrie Mitchell   | 1   | 1   | 1   | 1   |   |     |     |     |     |     |     |     |     |     |     |     | 1   |    | 4 |
| Jenny Ruemmele  | 1   | 0   | 1   | 1   |   |     |     |     |     |     |     |     |     |     |     |     | 1   |    | 4 |
| Claire Ryberg   | 1   | 0   | 1   | 1   |   |     |     |     |     |     |     |     |     |     |     |     | 1   |    | 4 |
| Kim Schwisow  | 1   | 1   | 1   | 1   |   |     |     |     |     |     |     |     |     |     |     |     | 1   |    | 5 |
| Max Silverson   | 0   | 0   | 0   | 0   |   |     |     |     |     |     |     |     |     |     |     |     | 0   |    | 0 |
| Gregg Tankersley  | 1   | 0   | 0   | 0   |   |     |     |     |     |     |     |     |     |     |     |     | 0   |    | 1 |
| Verna Vanis   | 1   | 1   | 0   | 0   |   |     |     |     |     |     |     |     |     |     |     |     | 0   |    | 3 |

**FY25 Q3- MMHD Administrative Support - Hours Tracking for Alexa Hersel**

| <b>Date Worked</b> | <b>Hours</b> | <b>Work Description</b>  |
|--------------------|--------------|--|
| <b>Q1</b>          |              |  |
| 10/2/2024          | 3            | Housing Workgroup meeting, minutes, and follow up.   |
| 10/8/2024          | 3            | October Board meeting prep, and sent packet out.   |
| 10/9/2024          | 1            | Housing Workgroup meeting packet sent out.   |
| 10/14/2024         | 2            | Updated October Board meeting packet with additional documents.  |
| 10/15/2024         | 4            | October Board meeting, follow up, meeting mins, etc.   |
| 10/23/2024         | 3            | Housing Workgroup meeting packet sent out.   |
| 10/24/2024         | 2            | Coordination of Board Member communication and scheduling of special meeting on 10/28/24   |
| 10/28/2024         | 2            | 11/1/23 Housing workgroup meeting prep.  |
| 10/25/2023         | 2            | Special Board meeting and minutes.   |
| 10/30/2024         | 2            | Housing Workgroup meeting packet sent out.   |
| 11/6/2024          | 3            | November 6 Housing Workgroup meeting, minutes, and follow up.  |
| 11/12/2024         | 3            | November Board meeting prep, and sent packet out.  |
| 11/13/2024         | 2            | Housing Workgroup meeting packet sent out.   |
| 11/19/2024         | 4            | November Board meeting, minutes, and follow up.  |
| 11/20/2024         | 3            | November 20 Housing Workgroup meeting, minutes, and follow up.   |
| 11/21/2024         | 4            | Neighborhood meeting for Housing Workgroup project.  |
| 11/26/2024         | 3            | End of year administrative tasks: public notices for 2025, term information to the County Clerk's office, etc.   |
| 11/27/2024         | 2            | December 4 Housing Workgroup meeting packet sent out.  |
| 12/4/2024          | 3            | Housing Workgroup meeting, minutes, and follow up.   |
| 12/5/2024          | 2            | MMHD Audit support with Marge Krahn and Lamm CPA.  |
| 12/10/2024         | 3            | December Board meeting prep, and sent packet out.  |
| 12/17/2024         | 5            | December Board meeting, minutes, follow up, and sent out 2025 meeting calendar invites.  |
| <b>Q2</b>          |              |  |
| 1/7/2025           | 4            | Coordination, prep, and actual meeting of P&Z Commissioners  |
| 1/8/2025           | 3            | Housing Workgroup meeting packet sent out. Help with audit submissions and questions.  |
| 1/14/2025          | 3            | January Board meeting prep, and sent packet out.   |
| 1/15/2025          | 3            | Housing Workgroup meeting, minutes, and follow up.   |
| 1/21/2025          | 0            | *Alexa was out on medical leave and missed the January board meeting.  |
| 1/22/2025          | 4            | Public records request, asset disposal confirmation, cancellation of 2/5 Housing Workgroup meeting, and communication with board members, legal counsel, and Valley County Clerk's office.   |
| 2/10/2025          | 1            | MMHD Audit coordination with Treasurer and Lamm CPA,   |
| 2/11/2025          | 8            | Alexa returned from medical leave and entire day spent on catch up: conversations with board members, legal counsel, board meeting prep, board member election discussion, asset disposal correction, and send board meeting packet out. |
| 2/12/2025          | 2            | Sent documents to Board Secretary for new website development, resent meeting packet as there was an IT glitch day before in sending,  |
| 2/18/2025          | 6            | February board meeting, extra conference room set up and coordination, board meeting minutes, and follow up.   |
| 2/19/2025          | 1            | More documentation sent to Board Secretary for website build and scheduling of asset review with SLHS finance team and MMHD Treasurer.   |
| 2/25/2025          | 1            | Asset disposal meeting with SLHS finance and Board Treasurer.  |
| 2/27/2025          | 1            | Election paperwork and Board member communication for County Elections Clerk submission.   |
| 3/7/2025           | 3            | Email communication regarding March Housing Workgroup meetings and coordination for McCall P&Z Public Hearing. Discussion about public information campaign with Aana Vannoy.  |
| 3/11/2025          | 4            | March board meeting prep, draft minutes, email communication with board members and legal counsel.   |
| 3/13/2025          | 3            | McCall P&Z Public Hearing  |
| 3/14/2025          | 3            | Coordination and scheduling of 4/1 HSA Workgroup meeting.  |
| 3/18/2025          | 4            | March board meeting, follow up, and confirmation of cancelling the 4/2 Housing Workgroup meeting.  |
| 3/27/2025          | 3            | Quarterly Asset/Depreciation Schedule review and draft FY26 M&O budget calculations with Board Treasurer.  |
| 4/1/2025           | 3            | HSA Workgroup Meeting, minutes, and follow up items.   |
| 4/7/2025           | 2            | Scheduling and coordination of May 16 Special Board Mtg  |
| 4/8/2025           | 4            | April board meeting prep, draft minutes, email communication with board members and legal counsel.   |
| 4/15/2025          | 4            | April board meeting, board meeting minutes, and follow up.   |
| 4/23/2025          | 1            | Quarterly Asset review   |
| 4/25/2025          | 4            | Prep for May meetings - special, regular, and workgroups. Sent out agendas/packets for 5/6 and 5/7 workgroups  |
| 5/6/2025           | 3            | HSA Workgroup Meeting, minutes, and follow up items.   |
| 5/8/2025           | 3            | May special board meeting prep, draft minutes, email communication with board members and legal counsel. Sent out Public Information Campaign workgroup agenda   |
| 5/9/2025           | 1            | Special 5/16 Board meeting prep, and sent packet out.  |

|                    |   |   |
|--------------------|---|---|
| 5/12/2025          | 2 | MMHD Documentation Support for Executive Board and Public Records Request.                        |
| 5/13/2025          | 2 | 5/20 Regular Board meeting prep, and sent packet out. Cancellation of 5/21 Housing Workgroup Mtg. |
| 5/15/2025          | 3 | Public Information Campaign Meeting, follow up, and minutes.                                      |
| 5/16/2025          | 4 | Special MMHD Board Meeting, follow up, and meeting minutes.                                       |
| 5/19/2025          | 1 | Sent out June 6 HSA Workgroup Meeting agenda  |
| 5/20/2025          | 4 | Regular May Board Meeting, follow up communication.   |
| 5/21/2025          | 1 | Scheduling of the June 5 Public Information Campaign Workgroup Meeting.                           |
| 5/22/2025          | 8 | Idaho State Tax Commission Budget & Levy Training.  |
| 5/28/2025          | 2 | Sent out June 4 HSA Workgroup Meeting Packet and Cancelled June 4 Housing Workgroup Meeting.      |
| 6/4/2025           | 3 | HSA Workgroup Meeting, minutes, and follow up items.  |
| 6/5/2025           | 3 | Public Information Campaign Meeting, follow up, and minutes.                                      |
| 6/6/2025           | 6 | Prep for June Board Meeting, sent documents to Board Secretary for Website.                       |
| 6/9/2025-6/29/2025 | 0 | *Alexa was out on medical leave.  |
| 6/30/2025          | 6 | Catch up from June Board Activities and prep for July Workgroup and Board Meetings.               |

| Comparisons:                |             |             |
|-----------------------------|-------------|-------------|
| <b>Grand Total FY24 Q1:</b> |             | <b>61</b>   |
| <b>Grand Total FY25 Q1:</b> |             | <b>61</b>   |
| <b>Monthly Comparison</b>   | <b>FY24</b> | <b>FY25</b> |
| October                     | 17          | 24          |
| November                    | 23          | 24          |
| December                    | 21          | 13          |
| <b>Grand Total FY24 Q2:</b> |             | <b>41</b>   |
| <b>Grand Total FY25 Q2:</b> |             | <b>57</b>   |
| <b>Monthly Comparison</b>   | <b>FY24</b> | <b>FY25</b> |
| January                     | 17          | 17          |
| February                    | 14          | 20          |
| March                       | 11          | 20          |
| <b>Grand Total FY24 Q3:</b> |             | <b>52</b>   |
| <b>Grand Total FY25 Q3:</b> |             | <b>70</b>   |
| <b>Monthly Comparison</b>   | <b>FY24</b> | <b>FY25</b> |
| April                       | 16          | 18          |
| May                         | 24          | 34          |
| June                        | 12          | 18          |

## McCall Memorial Hospital District Balance Sheet Detail

07/02/25

Accrual Basis

As of June 30, 2025

| Type                                   | Date       | Num | Adj | Name                   | Memo            | Clr | Split            | Debit      | Credit       | Balance      |
|--|------------|-----|-----|------------------------|-----------------|-----|------------------|------------|--------------|--------------|
| <b>ASSETS</b>                          |            |     |     |                        |                 |     |                  |            |              | 5,604,369.02 |
| <b>Current Assets</b>                  |            |     |     |                        |                 |     |                  |            |              | 5,604,369.02 |
| <b>Checking/Savings</b>                |            |     |     |                        |                 |     |                  |            |              | 2,945,335.77 |
| <b>IDF- Cash Sweep</b>                 |            |     |     |                        |                 |     |                  |            |              | 2,676,648.67 |
| Transfer                               | 06/15/2025 |     |     |                        | Funds Transf... | X   | IDF- Checking... |            | 641,267.44   | 2,035,381.23 |
| Deposit                                | 06/30/2025 |     |     |                        | Interest        | X   | Interest Income  | 5,197.83   |              | 2,040,579.06 |
| Total IDF- Cash Sweep                  |            |     |     |                        |                 |     |                  | 5,197.83   | 641,267.44   | 2,040,579.06 |
| <b>IDF- Checking-3112</b>              |            |     |     |                        |                 |     |                  |            |              | 17,976.18    |
| Bill Pmt -Check                        | 06/02/2025 | 570 |     | Valley County Tax ...  | Memo:CHEC...    | X   | Accounts Paya... |            | 3,205.15     | 14,771.03    |
| Check                                  | 06/06/2025 |     |     | Verizon                | DBT CRD 20...   | X   | Office Supplies  |            | 35.91        | 14,735.12    |
| Bill Pmt -Check                        | 06/11/2025 | 571 |     | Lamm and Compan...     | Memo:CHEC...    | X   | Accounts Paya... |            | 250.00       | 14,485.12    |
| Bill Pmt -Check                        | 06/11/2025 | 572 |     | United States Post ... | Memo:CHEC...    | X   | Accounts Paya... |            | 73.00        | 14,412.12    |
| Transfer                               | 06/15/2025 |     |     |                        | Funds Transfer  | X   | IDF- Cash Sw...  | 641,267.44 |              | 655,679.56   |
| Transfer                               | 06/17/2025 |     |     |                        | Funds Transfer  | X   | IDF- Money M...  | 445.73     |              | 656,125.29   |
| Bill Pmt -Check                        | 06/19/2025 | 573 |     | Andy Laidlaw           |                 |     | Accounts Paya... |            | 206.00       | 655,919.29   |
| Deposit                                | 06/19/2025 |     |     |                        | Deposit Paye... | X   | Sales Tax        | 24,843.08  |              | 680,762.37   |
| Deposit                                | 06/19/2025 |     |     |                        | Deposit Paye... | X   | -SPLIT-          | 42,059.02  |              | 722,821.39   |
| Bill Pmt -Check                        | 06/23/2025 | 574 |     | Kirk- Fig              | Memo:CHEC...    | X   | Accounts Paya... |            | 2,402.00     | 720,419.39   |
| Bill Pmt -Check                        | 06/23/2025 | 575 |     | St Luke's McCall Fo... | Memo:CHEC...    | X   | Accounts Paya... |            | 485,899.00   | 234,520.39   |
| Bill Pmt -Check                        | 06/23/2025 | 576 |     | St Luke's McCall Fo... | Memo:CHEC...    | X   | Accounts Paya... |            | 155,368.44   | 79,151.95    |
| Deposit                                | 06/30/2025 |     |     | Idaho First Bank       | INTEREST D...   | X   | Interest Income  | 9.39       |              | 79,161.34    |
| Total IDF- Checking-3112               |            |     |     |                        |                 |     |                  | 708,624.66 | 647,439.50   | 79,161.34    |
| <b>IDF- Money Market-4931</b>          |            |     |     |                        |                 |     |                  |            |              | 250,710.92   |
| Deposit                                | 06/15/2025 |     |     | Idaho First Bank       | INTEREST D...   | X   | Interest Income  | 734.81     |              | 251,445.73   |
| Transfer                               | 06/17/2025 |     |     |                        | Funds Transf... |     | IDF- Checking... |            | 445.73       | 251,000.00   |
| Total IDF- Money Market-4931           |            |     |     |                        |                 |     |                  | 734.81     | 445.73       | 251,000.00   |
| <b>US BANK- 1033</b>                   |            |     |     |                        |                 |     |                  |            |              | 0.00         |
| Total US BANK- 1033                    |            |     |     |                        |                 |     |                  |            |              | 0.00         |
| Total Checking/Savings                 |            |     |     |                        |                 |     |                  | 714,557.30 | 1,289,152.67 | 2,370,740.40 |
| <b>Accounts Receivable</b>             |            |     |     |                        |                 |     |                  |            |              | 443,965.28   |
| <b>Accounts Receivable</b>             |            |     |     |                        |                 |     |                  |            |              | 443,965.28   |
| Payment                                | 06/19/2025 |     |     | Valley County Warr...  |                 |     | Undeposited F... |            | 0.02         | 443,965.26   |
| Payment                                | 06/19/2025 |     |     | Valley County Warr...  |                 |     | Undeposited F... |            | 176.60       | 443,788.66   |
| Payment                                | 06/19/2025 |     |     | Valley County Warr...  |                 |     | Undeposited F... |            | 690.59       | 443,098.07   |
| Payment                                | 06/19/2025 |     |     | Valley County Warr...  |                 |     | Undeposited F... |            | 40,858.33    | 402,239.74   |
| Total Accounts Receivable              |            |     |     |                        |                 |     |                  | 0.00       | 41,725.54    | 402,239.74   |
| Total Accounts Receivable              |            |     |     |                        |                 |     |                  | 0.00       | 41,725.54    | 402,239.74   |
| <b>Other Current Assets</b>            |            |     |     |                        |                 |     |                  |            |              | 2,215,067.97 |
| <b>Account for Credit Transfer</b>     |            |     |     |                        |                 |     |                  |            |              | 0.00         |
| Total Account for Credit Transfer      |            |     |     |                        |                 |     |                  |            |              | 0.00         |
| <b>Prepaid Items</b>                   |            |     |     |                        |                 |     |                  |            |              | 663,798.98   |
| Total Prepaid Items                    |            |     |     |                        |                 |     |                  |            |              | 663,798.98   |
| <b>Sales Tax Receivable</b>            |            |     |     |                        |                 |     |                  |            |              | 27,312.28    |
| Total Sales Tax Receivable             |            |     |     |                        |                 |     |                  |            |              | 27,312.28    |
| <b>Delinquent Taxes Receivable</b>     |            |     |     |                        |                 |     |                  |            |              | 32,000.00    |
| Total Delinquent Taxes Receivable      |            |     |     |                        |                 |     |                  |            |              | 32,000.00    |
| <b>Taxes Receivable, Net</b>           |            |     |     |                        |                 |     |                  |            |              | 1,491,956.71 |
| Total Taxes Receivable, Net            |            |     |     |                        |                 |     |                  |            |              | 1,491,956.71 |
| <b>Undeposited Funds</b>               |            |     |     |                        |                 |     |                  |            |              | 0.00         |
| Payment                                | 06/19/2025 |     |     | Valley County Warr...  |                 | X   | Accounts Rec...  | 0.02       |              | 0.02         |
| Payment                                | 06/19/2025 |     |     | Valley County Warr...  |                 | X   | Accounts Rec...  | 176.60     |              | 176.62       |
| Payment                                | 06/19/2025 |     |     | Valley County Warr...  |                 | X   | Accounts Rec...  | 690.59     |              | 867.21       |
| Payment                                | 06/19/2025 |     |     | Valley County Warr...  |                 | X   | Accounts Rec...  | 40,858.33  |              | 41,725.54    |
| Deposit                                | 06/19/2025 |     |     | -MULTIPLE-             | Deposit Paye... | X   | IDF- Checking... |            | 41,725.54    | 0.00         |
| Total Undeposited Funds                |            |     |     |                        |                 |     |                  | 41,725.54  | 41,725.54    | 0.00         |
| Total Other Current Assets             |            |     |     |                        |                 |     |                  | 41,725.54  | 41,725.54    | 2,215,067.97 |
| Total Current Assets                   |            |     |     |                        |                 |     |                  | 756,282.84 | 1,372,603.75 | 4,988,048.11 |
| <b>Fixed Assets</b>                    |            |     |     |                        |                 |     |                  |            |              | 0.00         |
| <b>Land</b>                            |            |     |     |                        |                 |     |                  |            |              | 0.00         |
| Total Land                             |            |     |     |                        |                 |     |                  |            |              | 0.00         |
| <b>Building Improvements</b>           |            |     |     |                        |                 |     |                  |            |              | 0.00         |
| Total Building Improvements            |            |     |     |                        |                 |     |                  |            |              | 0.00         |
| <b>Advance for Tenant Improvements</b> |            |     |     |                        |                 |     |                  |            |              | 0.00         |
| Total Advance for Tenant Improvements  |            |     |     |                        |                 |     |                  |            |              | 0.00         |
| <b>Accumulated Depreciation</b>        |            |     |     |                        |                 |     |                  |            |              | 0.00         |
| Total Accumulated Depreciation         |            |     |     |                        |                 |     |                  |            |              | 0.00         |
| <b>Furniture and Equipment</b>         |            |     |     |                        |                 |     |                  |            |              | 0.00         |
| Total Furniture and Equipment          |            |     |     |                        |                 |     |                  |            |              | 0.00         |

## McCall Memorial Hospital District Balance Sheet Detail

Accrual Basis

As of June 30, 2025

| Type                                  | Date       | Num      | Adj | Name                   | Memo         | Clr | Split              | Debit               | Credit              | Balance             |
|---------------------------------------|------------|----------|-----|------------------------|--------------|-----|--------------------|---------------------|---------------------|---------------------|
| <b>Medical Equipment</b>              |            |          |     |                        |              |     |                    |                     |                     | 0.00                |
| Total Medical Equipment               |            |          |     |                        |              |     |                    |                     |                     | 0.00                |
| Total Fixed Assets                    |            |          |     |                        |              |     |                    |                     |                     | 0.00                |
| <b>Other Assets</b>                   |            |          |     |                        |              |     |                    |                     |                     | 0.00                |
| <b>Cascade Property Loan</b>          |            |          |     |                        |              |     |                    |                     |                     | 0.00                |
| Total Cascade Property Loan           |            |          |     |                        |              |     |                    |                     |                     | 0.00                |
| <b>Security Deposits Asset</b>        |            |          |     |                        |              |     |                    |                     |                     | 0.00                |
| Total Security Deposits Asset         |            |          |     |                        |              |     |                    |                     |                     | 0.00                |
| Total Other Assets                    |            |          |     |                        |              |     |                    |                     |                     | 0.00                |
| <b>TOTAL ASSETS</b>                   |            |          |     |                        |              |     |                    | <b>756,282.84</b>   | <b>1,372,603.75</b> | <b>4,988,048.11</b> |
| <b>LIABILITIES &amp; EQUITY</b>       |            |          |     |                        |              |     |                    |                     |                     | 5,604,369.02        |
| <b>Liabilities</b>                    |            |          |     |                        |              |     |                    |                     |                     | 1,518,586.19        |
| <b>Current Liabilities</b>            |            |          |     |                        |              |     |                    |                     |                     | 1,518,586.19        |
| <b>Accounts Payable</b>               |            |          |     |                        |              |     |                    |                     |                     | 0.00                |
| <b>Accounts Payable</b>               |            |          |     |                        |              |     |                    |                     |                     | 0.00                |
| Bill                                  | 06/02/2025 | 01262... |     | Valley County Tax ...  |              |     | Property Tax       |                     | 3,205.15            | 3,205.15            |
| Bill Pmt -Check                       | 06/02/2025 | 570      |     | Valley County Tax ...  | Memo:CHEC... |     | IDF- Checking...   | 3,205.15            |                     | 0.00                |
| Bill                                  | 06/11/2025 | 60862    |     | Lamm and Compan...     |              |     | Accounting         |                     | 250.00              | 250.00              |
| Bill Pmt -Check                       | 06/11/2025 | 571      |     | Lamm and Compan...     | Memo:CHEC... |     | IDF- Checking...   | 250.00              |                     | 0.00                |
| Bill                                  | 06/11/2025 | 062025   |     | United States Post ... |              |     | Postage and D...   |                     | 73.00               | 73.00               |
| Bill Pmt -Check                       | 06/11/2025 | 572      |     | United States Post ... | Memo:CHEC... |     | IDF- Checking...   | 73.00               |                     | 0.00                |
| Bill                                  | 06/19/2025 |          |     | Andy Laidlaw           |              |     | Office Supplies    |                     | 206.00              | 206.00              |
| Bill Pmt -Check                       | 06/19/2025 | 573      |     | Andy Laidlaw           |              |     | IDF- Checking...   | 206.00              |                     | 0.00                |
| Bill                                  | 06/23/2025 | 67717... |     | Kirk- Fig              |              |     | General Liabili... |                     | 2,402.00            | 2,402.00            |
| Bill Pmt -Check                       | 06/23/2025 | 574      |     | Kirk- Fig              | Memo:CHEC... |     | IDF- Checking...   | 2,402.00            |                     | 0.00                |
| Bill                                  | 06/23/2025 | 06232... |     | St Luke's McCall Fo... |              |     | Workforce Ho...    |                     | 485,899.00          | 485,899.00          |
| Bill                                  | 06/23/2025 | 06232... |     | St Luke's McCall Fo... |              |     | Workforce Ho...    |                     | 155,368.44          | 641,267.44          |
| Bill Pmt -Check                       | 06/23/2025 | 575      |     | St Luke's McCall Fo... | Memo:CHEC... |     | IDF- Checking...   | 485,899.00          |                     | 155,368.44          |
| Bill Pmt -Check                       | 06/23/2025 | 576      |     | St Luke's McCall Fo... | Memo:CHEC... |     | IDF- Checking...   | 155,368.44          |                     | 0.00                |
| Total Accounts Payable                |            |          |     |                        |              |     |                    | 647,403.59          | 647,403.59          | 0.00                |
| Total Accounts Payable                |            |          |     |                        |              |     |                    | 647,403.59          | 647,403.59          | 0.00                |
| <b>Credit Cards</b>                   |            |          |     |                        |              |     |                    |                     |                     | 0.00                |
| Total Credit Cards                    |            |          |     |                        |              |     |                    |                     |                     | 0.00                |
| <b>Other Current Liabilities</b>      |            |          |     |                        |              |     |                    |                     |                     | 1,518,586.19        |
| <b>A/P (Audit)</b>                    |            |          |     |                        |              |     |                    |                     |                     | 3,494.00            |
| Total A/P (Audit)                     |            |          |     |                        |              |     |                    |                     |                     | 3,494.00            |
| <b>Deferred Taxes</b>                 |            |          |     |                        |              |     |                    |                     |                     | 0.00                |
| Total Deferred Taxes                  |            |          |     |                        |              |     |                    |                     |                     | 0.00                |
| <b>Owed to St Lukes Bank Error</b>    |            |          |     |                        |              |     |                    |                     |                     | 0.00                |
| Total Owed to St Lukes Bank Error     |            |          |     |                        |              |     |                    |                     |                     | 0.00                |
| <b>Payroll Liabilities</b>            |            |          |     |                        |              |     |                    |                     |                     | 0.00                |
| Total Payroll Liabilities             |            |          |     |                        |              |     |                    |                     |                     | 0.00                |
| <b>Unavailable Property Taxes</b>     |            |          |     |                        |              |     |                    |                     |                     | 1,515,092.19        |
| Total Unavailable Property Taxes      |            |          |     |                        |              |     |                    |                     |                     | 1,515,092.19        |
| Total Other Current Liabilities       |            |          |     |                        |              |     |                    |                     |                     | 1,518,586.19        |
| Total Current Liabilities             |            |          |     |                        |              |     |                    | 647,403.59          | 647,403.59          | 1,518,586.19        |
| <b>Long Term Liabilities</b>          |            |          |     |                        |              |     |                    |                     |                     | 0.00                |
| Total Long Term Liabilities           |            |          |     |                        |              |     |                    |                     |                     | 0.00                |
| Total Liabilities                     |            |          |     |                        |              |     |                    | 647,403.59          | 647,403.59          | 1,518,586.19        |
| <b>Equity</b>                         |            |          |     |                        |              |     |                    |                     |                     | 4,085,782.83        |
| <b>Sinking Fund</b>                   |            |          |     |                        |              |     |                    |                     |                     | 1,498,172.00        |
| Total Sinking Fund                    |            |          |     |                        |              |     |                    |                     |                     | 1,498,172.00        |
| <b>Opening Balance Equity</b>         |            |          |     |                        |              |     |                    |                     |                     | 0.00                |
| Total Opening Balance Equity          |            |          |     |                        |              |     |                    |                     |                     | 0.00                |
| <b>Fund Balances</b>                  |            |          |     |                        |              |     |                    |                     |                     | 1,005,691.02        |
| Total Fund Balances                   |            |          |     |                        |              |     |                    |                     |                     | 1,005,691.02        |
| <b>Net Income</b>                     |            |          |     |                        |              |     |                    |                     |                     | 1,581,919.81        |
| Total Net Income                      |            |          |     |                        |              |     |                    | 647,439.50          | 31,118.59           | 965,598.90          |
| Total Equity                          |            |          |     |                        |              |     |                    | 647,439.50          | 31,118.59           | 3,469,461.92        |
| <b>TOTAL LIABILITIES &amp; EQUITY</b> |            |          |     |                        |              |     |                    | <b>1,294,843.09</b> | <b>678,522.18</b>   | <b>4,988,048.11</b> |

## McCall Memorial Hospital District

07/02/25

## Balance Sheet

Accrual Basis

As of June 30, 2025

|  | Jun 30, 25          | May 31, 25          |
|--|---------------------|---------------------|
| <b>ASSETS</b>                          |                     |                     |
| <b>Current Assets</b>                  |                     |                     |
| <b>Checking/Savings</b>                |                     |                     |
| IDF- Cash Sweep                        | 2,040,579.06        | 2,676,648.67        |
| IDF- Checking-3112                     | 79,161.34           | 17,976.18           |
| IDF- Money Market-4931                 | 251,000.00          | 250,710.92          |
| <b>Total Checking/Savings</b>          | 2,370,740.40        | 2,945,335.77        |
| <b>Accounts Receivable</b>             |                     |                     |
| Accounts Receivable                    | 402,239.74          | 443,965.28          |
| <b>Total Accounts Receivable</b>       | 402,239.74          | 443,965.28          |
| <b>Other Current Assets</b>            |                     |                     |
| Prepaid Items                          | 663,798.98          | 663,798.98          |
| Sales Tax Receivable                   | 27,312.28           | 27,312.28           |
| Delinquent Taxes Receivable            | 32,000.00           | 32,000.00           |
| Taxes Receivable, Net                  | 1,491,956.71        | 1,491,956.71        |
| <b>Total Other Current Assets</b>      | 2,215,067.97        | 2,215,067.97        |
| <b>Total Current Assets</b>            | 4,988,048.11        | 5,604,369.02        |
| <b>TOTAL ASSETS</b>                    | <b>4,988,048.11</b> | <b>5,604,369.02</b> |
| <b>LIABILITIES &amp; EQUITY</b>        |                     |                     |
| <b>Liabilities</b>                     |                     |                     |
| <b>Current Liabilities</b>             |                     |                     |
| <b>Other Current Liabilities</b>       |                     |                     |
| A/P (Audit)                            | 3,494.00            | 3,494.00            |
| Unavailable Property Taxes             | 1,515,092.19        | 1,515,092.19        |
| <b>Total Other Current Liabilities</b> | 1,518,586.19        | 1,518,586.19        |
| <b>Total Current Liabilities</b>       | 1,518,586.19        | 1,518,586.19        |
| <b>Total Liabilities</b>               | 1,518,586.19        | 1,518,586.19        |
| <b>Equity</b>                          |                     |                     |
| Sinking Fund                           | 1,498,172.00        | 1,498,172.00        |
| Fund Balances                          | 1,005,691.02        | 1,005,691.02        |
| Net Income                             | 965,598.90          | 1,581,919.81        |
| <b>Total Equity</b>                    | 3,469,461.92        | 4,085,782.83        |
| <b>TOTAL LIABILITIES &amp; EQUITY</b>  | <b>4,988,048.11</b> | <b>5,604,369.02</b> |

**McCall Memorial Hospital District**  
**Profit & Loss Budget vs. Actual**  
**October 2024 through June 2025**

|                                      | Oct '24 - Jun 25  | Budget             | \$ Over Budget      | % of Budget    |
|--------------------------------------|-------------------|--------------------|---------------------|----------------|
| <b>Ordinary Income/Expense</b>       |                   |                    |                     |                |
| <b>Income</b>                        |                   |                    |                     |                |
| Forgone Income                       | 57,113.00         | 57,113.00          | 0.00                | 100.0%         |
| <b>Property Tax Income</b>           |                   |                    |                     |                |
| M & O Fund                           | 100,000.00        | 100,000.00         | 0.00                | 100.0%         |
| Sinking Fund                         | 1,321,397.00      | 1,321,397.00       | 0.00                | 100.0%         |
| Interest and Penalties               | 12,159.71         | 6,000.00           | 6,159.71            | 202.7%         |
| <b>Total Property Tax Income</b>     | 1,433,556.71      | 1,427,397.00       | 6,159.71            | 100.4%         |
| <b>Sales Tax</b>                     | 137,691.53        | 0.00               | 137,691.53          | 100.0%         |
| <b>Personal Property Tax Replace</b> | 5,196.40          | 0.00               | 5,196.40            | 100.0%         |
| <b>Interest Income</b>               | 47,368.92         | 1,440.00           | 45,928.92           | 3,289.5%       |
| <b>Total Income</b>                  | 1,680,926.56      | 1,485,950.00       | 194,976.56          | 113.1%         |
| <b>Expense</b>                       |                   |                    |                     |                |
| Remitted to SLHS                     | 0.00              | 0.00               | 0.00                | 0.0%           |
| Legal Notices                        | 269.80            | 420.00             | -150.20             | 64.2%          |
| Bank Service Charges                 | 25.00             |                    |                     |                |
| Office Supplies                      | 1,947.82          | 225.00             | 1,722.82            | 865.7%         |
| <b>Contract Service Fees</b>         |                   |                    |                     |                |
| Accounting                           | 7,750.00          | 8,250.00           | -500.00             | 93.9%          |
| <b>Total Contract Service Fees</b>   | 7,750.00          | 8,250.00           | -500.00             | 93.9%          |
| General Liability Insurance          | 2,402.00          | 2,341.00           | 61.00               | 102.6%         |
| <b>Capital Expenditure</b>           |                   |                    |                     |                |
| Workforce Housing Project            | 641,267.44        | 1,600,000.00       | -958,732.56         | 40.1%          |
| Ambulance Shelter & Living Qtrs      | 0.00              | 42,835.00          | -42,835.00          | 0.0%           |
| <b>Total Capital Expenditure</b>     | 641,267.44        | 1,642,835.00       | -1,001,567.56       | 39.0%          |
| Legal Fees                           | 55,674.45         | 30,000.00          | 25,674.45           | 185.6%         |
| Postage and Delivery                 | 146.00            | 200.00             | -54.00              | 73.0%          |
| Property Tax                         | 5,845.15          | 6,433.00           | -587.85             | 90.9%          |
| <b>Total Expense</b>                 | 715,327.66        | 1,690,704.00       | -975,376.34         | 42.3%          |
| <b>Net Ordinary Income</b>           | 965,598.90        | -204,754.00        | 1,170,352.90        | -471.6%        |
| <b>Other Income/Expense</b>          |                   |                    |                     |                |
| <b>Other Income</b>                  |                   |                    |                     |                |
| Fund Balance Carryover               | 0.00              | 0.00               | 0.00                | 0.0%           |
| <b>Total Other Income</b>            | 0.00              | 0.00               | 0.00                | 0.0%           |
| <b>Net Other Income</b>              | 0.00              | 0.00               | 0.00                | 0.0%           |
| <b>Net Income</b>                    | <b>965,598.90</b> | <b>-204,754.00</b> | <b>1,170,352.90</b> | <b>-471.6%</b> |

**McCALL MEMORIAL HOSPITAL DISTRICT  
HOUSING WORKGROUP MEETING MINUTES  
WEDNESDAY, JUNE 18, 2025; 9:05 – 9:37 a.m.  
FOUNDATION CONFERENCE ROOM & MICROSOFT TEAMS VIRTUAL MEETING**

**ATTENDANCE:** Marge Krahn, District Treasurer

**GUESTS:** Laura Crawford SLM PR Mgr, Dr. Eddie Droge, SLM Foundation Board Member, Amber Green, SLM COO/CNO, Hayley Johnson, SLM Foundation Coordinator, Jordan Heller, SLHS Legal Counsel, Jenny Ruemmele, SLM Foundation Executive Director, Claire Ryberg, SLM Foundation Board Member, Kim Schwisow, SLHS Real Estate, Verna Vanis, SLM Foundation Board Member/Housing Workgroup co-chair

**ABSENT:** Steve Clements, District Trustee, Bill Colpo, SLM Foundation Board Member, Alexa Hersel, SLM Executive Assistant, Andy Laidlaw, District Chair, Steve Millemann, MMHD Legal Counsel, Mike Vineyard, MMHD Trustee,

**WELCOME** – Verna Vanis, SLM Foundation Board Member and co-chair, convened the meeting at 9:05 a.m. The in-person attendance included Dr. Eddie Droge, Amber Green, Hayley Johnson, Marge Krahn, Jenny Ruemmele, and Verna Vanis. All other participants attended remotely.

**STATUS REPORT – PROJECT LAND USE ENTITLEMENTS** – Jenny Ruemmele, SLM Foundation Executive Director, reported that Andy Laidlaw continues to oversee project management and has been instrumental in guiding interior adjustments based on feedback. There is an active dialogue with Irontown to finalize insulation upgrades that will ensure energy efficiency, a priority for long-term sustainability. The team is proactively tracking the state permitting process to minimize further delays. Foundation staff remain hopeful that the Irontown delivery, with favorable weather, and construction will conclude before snowfall. Site setup, including trailer delivery and infrastructure prep, is on track.

**INVOICE APPROVAL PROCESS DISCUSSION**- Jenny Ruemmele, SLM Foundation Executive Director, detailed the importance of a layered approval structure to maintain transparency and accountability. Verna emphasized that this committee's early review ensures the Hospital District is comfortable with disbursement timing. Marge added that Andy will vet all pay requests for accuracy before advancing them to the group. The Hospital District Board approved Andy to serve as the owner's representative at their June board meeting. Laura noted the Hospital District discussed interest in IHFA overseeing the responsibility of paying invoices. Claire requested that invoices be sent digitally for review and approval.

**COMMUNICATION AND PUBLIC EDUCATION** – Amber Green, SLM COO/CNO, shared that visibility into project milestones is a key priority for St. Luke's employees and the Hospital District. St. Luke's is partnering with the Hospital District on a public information campaign. The Foundation is developing educational materials that will be available for staff to help advocate for the project in their departments along with highlighting how housing access improves healthcare delivery.

**ATTORNEY GENERAL INQUIRY AND MEDIA RESPONSE** – Marge Krahn reported that a local newspaper article referenced a group of community members are planning on filing a request to investigate the agreements between the Hospital District and St. Luke's to the Idaho Attorney General. Amber clarified that the AG has not launched a formal investigation, and the allegations contain misinformation. Steve Millemann is leading efforts to clarify facts and invite open dialogue

with the AG's office if needed. Jordan Heller emphasized coordination between legal teams and confirmed that the filing date for any official complaint is still to be determined.

**COMMITTEE REFLECTIONS AND STRATEGY** – Jenny Ruemmele, SLM Foundation Executive Director, thanked Marge Krahn for her work on the Hospital District board and acknowledged the added scrutiny brought by public funding. Amber stressed that despite controversy, protecting health care infrastructure and ensuring workforce stability remains a priority. Committee members expressed cautious optimism about delivering 8–12 housing units by year-end.

**PROPERTY TAX INQUIRY** – Jenny Ruemmele, SLM Foundation Executive Director, asked about property tax implications, and Jordan Heller responded that an analysis is pending, and they will coordinate carefully with all involved parties to ensure a respectful and accurate process.

**NEXT STEPS** - Verna Vanis, noted that the next Workforce Housing Committee meeting scheduled for Monday, July 14, 2025, at 9:00 AM at the Foundation office.

**OTHER BUSINESS, & PUBLIC COMMENT** – None.

**ADJOURNMENT** - Hearing no other comments or updates, the workgroup adjourned at 9:37 a.m.

Respectfully submitted,

---

Travis Leonard, MMHD Board Secretary  
:HJ



**McCall Memorial Hospital**  
*District*

**McCALL MEMORIAL HOSPITAL DISTRICT  
HOUSING WORKGROUP MEETING**

**MONDAY JULY 14, 2025; 9:00 - 10:00 a.m.**

**SLM Foundation Board Room, 106 East Park Street, McCall, ID 83638**

**For Microsoft Teams Link: [Click here to join the meeting](#)**

**Virtual Meeting ID: 242 509 359 984 Passcode: VzLekX**

**Phone: 1 208-996-1717 Conference ID: 547 175 914#**

**AGENDA**

- 1.) Welcome – Andy Laidlaw & Verna Vanis - Workgroup Co-Chairs
- 2.) Project Update - Jenny Ruemmele, SLM Executive Foundation Director
- 3.) *ACTION* - Approval of Monthly Invoices – Andy Laidlaw, Workgroup Co-Chair
- 4.) Next Steps – Andy Laidlaw & Verna Vanis - Workgroup Co-Chairs
- 5.) Other Business – Andy Laidlaw & Verna Vanis - Workgroup Co-Chairs
- 6.) Public Comment – Andy Laidlaw & Verna Vanis - Workgroup Co-Chairs
- 7.) Adjourn – Andy Laidlaw & Verna Vanis - Workgroup Co-Chairs

**Upcoming Meetings:**

**Next Board Meeting – Tuesday, July 15; 7:30 – 9:00 a.m.**

**MMHD Housing Workgroup Meeting – Monday, August 18 ; 9:00 – 10:00 a.m.**

**SLM Foundation Board – Wednesday, August 20 ; 2:00 – 4:00 p.m.**

# Ambulance Shelter & Living Quarters

*Progress Update*

7/15/2025



| <b>C00643 McCall Ambulance Garage and Crew Quarters</b>  |                 |                            |                  |                   |
|--|-----------------|----------------------------|------------------|-------------------|
| PCO/CO#  | Approval Status | Reason                     | Contingency Used | Remaining Balance |
|  |                 |                            | 130,486          | 130,486           |
| 1  | Approved        | Shower stall specification | 906              | 129,580           |
| 2  | Approved        | Sidewalk & Snowmelt        | 43,972           | 85,608            |
| 3  | Approved        | Dewatering & Overex        | 21,070           | 64,538            |
| 4  | Approved        | Lumber escalation          | 4,503            | 60,035            |
| 5  | Pending         | Credit to remove gutter    | -600             | 60,635            |
| 6  | Pending         | Added Hewitt St. Paving    | 19,158           | 41,477            |
|  |                 |                            | 89,009           |                   |
| <i>Contractor Contingency</i>  |                 |                            |                  | <i>10000</i>      |
| <i>Project Financial Reserve</i>   |                 |                            |                  | <i>190,597</i>    |
|  |                 |                            |                  |                   |
|  |                 |                            |                  | 331,083           |
| <p>Although no Contractor Contingency or Project Financial Reserve has been used, and there are currently no pending change orders, we do not recommend reducing either allocation until the project is further along.</p> |                 |                            |                  |                   |



# C00643 McCall Ambulance Garage

Status Date: 6/30/2025

Exec Sponsor: Amber Green

EPMO PM: N/A

PM: SS/MD

IHT PM: Beth Sermersheim

Supply Chain: Ashley Josephson

GC: Scott Hedrick

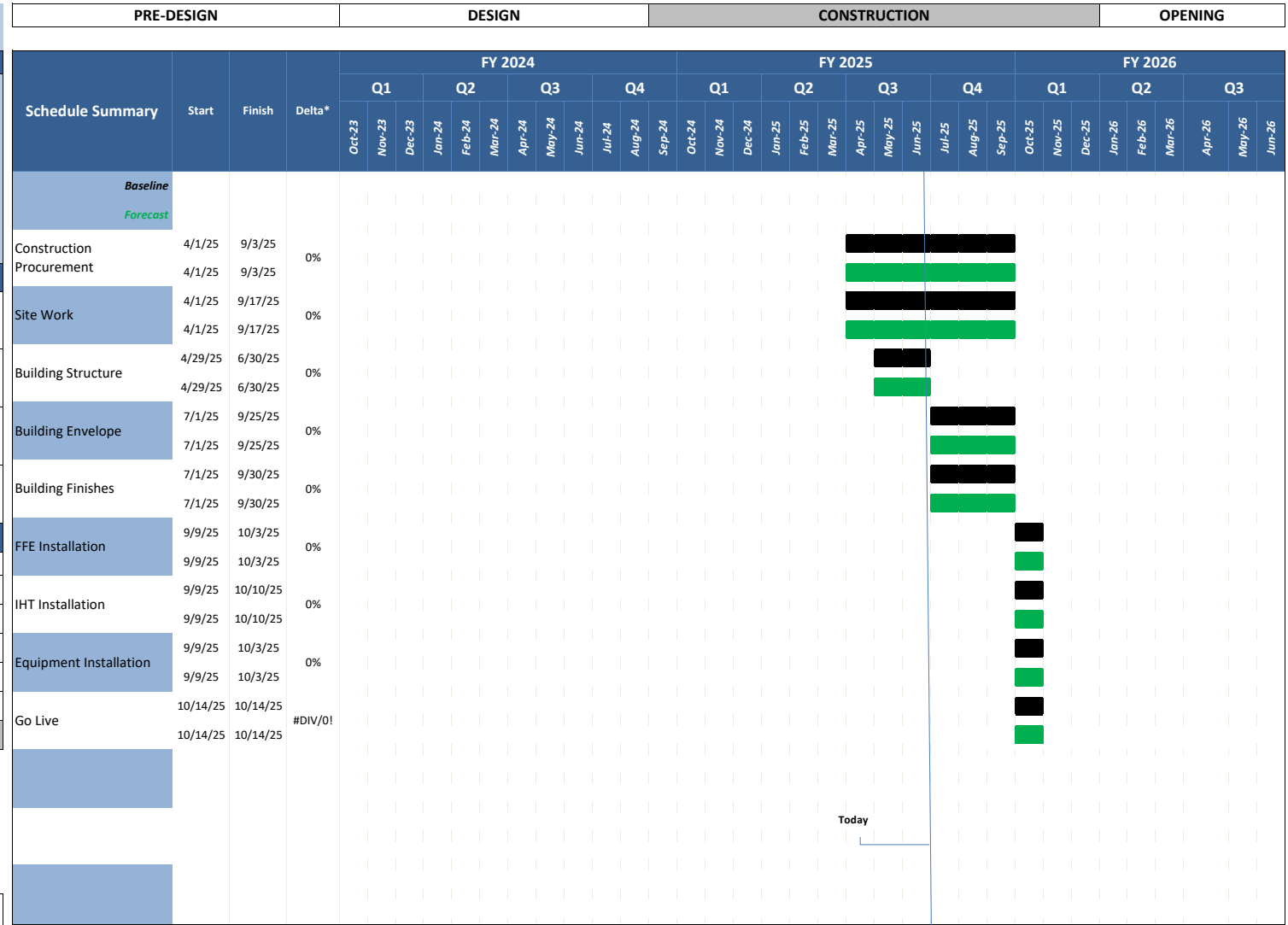
**Project Description:**  
Construction of a new ambulance garage on the McCall hospital campus. The project site is located on the north side of Hewitt Street.

| Overall Status:       |   |   |
|-----------------------|---|---|
| Schedule              | G | The project is on schedule  |
| Cost                  | G | The project is forecasted to be completed on budget   |
| Risk                  | G | See "Issues and Risks" log below  |
| Contingency Remaining | G | \$89,009 of the \$130,486 Contingency budget has been used. This is unchanged from previous month; there are no pending change orders |

| Budget Status:                       |                     |                     |                   |           |                  |                   |                     |
|--------------------------------------|---------------------|---------------------|-------------------|-----------|------------------|-------------------|---------------------|
| STATUS                               | Strata Budgeted     | Forecast            | Variance (\$ & %) |           | Prior Month Var. | Actuals           | Committed           |
| Design & Construction                | \$ 1,309,162        | \$ 1,461,783        | \$ 152,621        | 12%       | \$ 42,516        | \$ 236,070        | \$ 1,461,783        |
| FFE / Art                            | \$ 34,055           | \$ 12,000           | \$ (22,055)       | -65%      | \$ -             | \$ -              | \$ -                |
| IHT                                  | \$ 75,000           | \$ 75,000           | \$ -              | 0%        | \$ -             | \$ -              | \$ -                |
| Medical Equipment                    | \$ 15,000           | \$ 15,000           | \$ -              | 0%        | \$ -             | \$ -              | \$ -                |
| Contingency                          | \$ 130,486          | \$ -                | \$ (130,486)      |           | \$ -             | \$ -              | \$ -                |
| <b>Totals Less Financial Reserve</b> | <b>\$ 1,563,703</b> | <b>\$ 1,563,783</b> | <b>\$ 80</b>      | <b>0%</b> | <b>\$ -</b>      | <b>\$ 236,070</b> | <b>\$ 1,461,783</b> |
| Actual FY 24 Spend                   | \$ 112,424          | \$ 112,424          | \$ 0              | 0%        |                  |                   |                     |
| Capital FY 25 Spend                  | \$ 1,451,360        | \$ 1,197,166        | \$ (254,193)      | -18%      |                  |                   |                     |
| Capital FY 26 Spend                  | \$ -                | \$ 192,802          | \$ 192,802        | #DIV/0!   |                  |                   |                     |
| Capital FY 27 Spend                  | \$ -                | \$ -                | \$ -              | #DIV/0!   | \$ -             |                   |                     |

**Cost Variance Commentary:**

- FFE/Art forecast was adjusted lower per Diane Wilson (06/30/25)
- The Design and Construction forecast was adjusted upwards due to approved change orders and the addition of the building permit cost which was missed on the last dashboard (06/30/25)



\* Schedule deltas represent the percentage of slippage from the original scheduled duration (Forecast Finish - Baseline Finish) / (Baseline Finish - Baseline Start)

**Schedule Variance Commentary:**

- The start of construction was delayed 13-days due to excessive snow on the site (04/21/25)

| Key Accomplishments Prior Month   | 30-day Look Ahead  | Decisions Requested            | Issues & Risks (all High & Medium risks from Risk Register) |   |             |                       |
|---|--|--------------------------------|---|---|-------------|-----------------------|
|   |  |                                | Risk  | Update  | Probability | Impact: Cost or Delay |
| <ul style="list-style-type: none"> <li>- Exterior wall framing started</li> <li>- Asphalt patch on Hewitt Street</li> <li>- Landscaping on west side completed (cost not included in this project)</li> </ul> | <ul style="list-style-type: none"> <li>- Interior &amp; Exterior wall framing activities will be completed</li> <li>- Hollow metal door frames and overhead door will be set</li> <li>- Moisture barrier, cement fiberboard siding, metal siding and fascia and soffit will be installed</li> <li>- Roofing activities will begin the end of July</li> <li>- MEP rough-in activities will begin the end of July</li> </ul> | <sup>1)</sup><br><sup>2)</sup> | 1   | The unpredictable McCall weather will continue to be a risk to the project schedule | 20%         | Delay / Cost          |
|   |  |                                | 2   |   |             |                       |
|   |  |                                | 3   |   |             |                       |
|   |  |                                | 4   |   |             |                       |
|   |  |                                | 0   |   | 0%          |                       |
|   |  |                                | 0   |   | 0%          |                       |
|   |  |                                | 0   |   | 0%          |                       |
|   |  |                                | 0   |   | 0%          |                       |
| Other Issues:   |  |                                |   |   |             |                       |

| Status Key: | Cost             | Schedule                |
|-------------|------------------|-------------------------|
| Green       | +/- 5% of budget | On-time / ahead         |
| Amber       | 5-10% variance   | Delay <10 days baseline |
| Red         | 10+% variance    | Delay >10 days baseline |



07/02/25 02:36:33 PM



# Ambulance shelter

07/02/25 02:21:59 PM



Ambulance shelter

06/30/25 03:23:15 PM

# Area B Demo Update

**C00717 McCall Area B**

| PCO/CO# | Approval Status | Reason                       | Allowances | Contingency Used | Financial Reserve | Remaining Balance | Notes  |
|---------|-----------------|------------------------------|------------|------------------|-------------------|-------------------|--|
|         |                 |                              | 0.00       | 163,649.00       | 0.00              | 163,649.00        |  |
|         | Approved        | Asbestos Survey              | 0.00       | 7,557.00         | 0.00              | 156,092.00        | Handled in different budget<br>update fire rated walls-no cost |
|         | Approved        | Asbestos Abatement           | 0.00       | 21,950.00        |                   | 134,142.00        |  |
|         | Approved        | Asbestos Survey Roof/Wiring  | 0.00       | 12,467.00        |                   | 121,675.00        |  |
| PCO 02  | Pending         | Door Hardware                | 0.00       | 544.00           |                   | 121,131.00        |  |
| PCO 03  | Pending         | Credit                       | 0.00       | -369.00          |                   | 121,500.00        |  |
| PCO 04  | Voided          | Ara A Drain Pan              |            |                  |                   |                   |  |
| PCO 05  | Pending         | ISI                          | 0.00       | 0.00             |                   | 121,500.00        |  |
| PCO 06  | Pending         | Parking Lot Expansion        | 0.00       | 100,000.00       |                   | 21,500.00         |  |
| PCO 07  | Pending         | FACP/EP Room                 | 0.00       | 15,333.00        |                   | 6,167.00          |  |
| PCO 08  | Pending         | Equipment Screen             | 0.00       | 0.00             |                   | 6,167.00          |  |
| PCO 09  | Pending         | Comm Room Power              | 0.00       | 839.00           |                   | 5,328.00          |  |
| PCO 10  | Pending         | Fire Alarm Tariff            | 0.00       | 3,486.00         |                   | 1,842.00          |  |
| PCO 11  | Pending         | Testing and Balance          | 0.00       | 1,277.00         |                   | 565.00            |  |
| PCO 12  | Pending         | Roof Abatement               | 0.00       | 0.00             |                   | 565.00            |  |
| PCO 13  | Pending         | Weed Barrier Fabric          | 0.00       | 4,802.00         |                   | -4,237.00         |  |
| PCO 14  | Pending         | Boiler Compressor Relocation | 0.00       | 756.00           |                   | -4,993.00         |  |
| PCO 15  | Pending         | VFD Power                    | 0.00       | 2,774.00         |                   | -7,767.00         |  |
| PCO 16  | Pending         | Additional Ductwork Demo     | 0.00       | 2,730.00         |                   | -10,497.00        |  |
| PCO 17  | Pending         | Card Reader Power            | 0.00       | 0.00             |                   | -10,497.00        |  |
| PCO 18  | Pending         | Sprinkler Mod at MRI         | 0.00       | 7,295.00         |                   | -17,792.00        |  |
| PCO 19  |                 |                              | 0.00       | 0.00             |                   | -17,792.00        |  |
| PCO 20  | Pending         | Fire Lane Marking            | 0.00       | 265.00           |                   | -18,057.00        |  |
|         |                 |                              | 0.00       | 0.00             |                   |                   |  |
|         |                 |                              | 0.00       | 0.00             |                   |                   |  |
|         |                 |                              | 0.00       | 0.00             |                   |                   |  |
|         |                 |                              | 0.00       | 181,706.00       | 0.00              | -18,057.00        |  |



# C00717 McCall Expansion Area B

Status Date: 6/30/2025

Exec Sponsor: Amber Green  
IHT PM: Beth Sermersheim

EPMO PM: N/A  
Supply Chain: Ashley Josephson

PM: SS/MD  
GC: Layton

**Project Description:**  
The project consists of the demolition of the existing 50's wing of the hospital, construction of new exterior wall on the east side of the 90's wing, mechanical/electrical tie-ins to the Area A expansion, construction of new parking lot in the old location of the 50's wing, landscaping, etc.

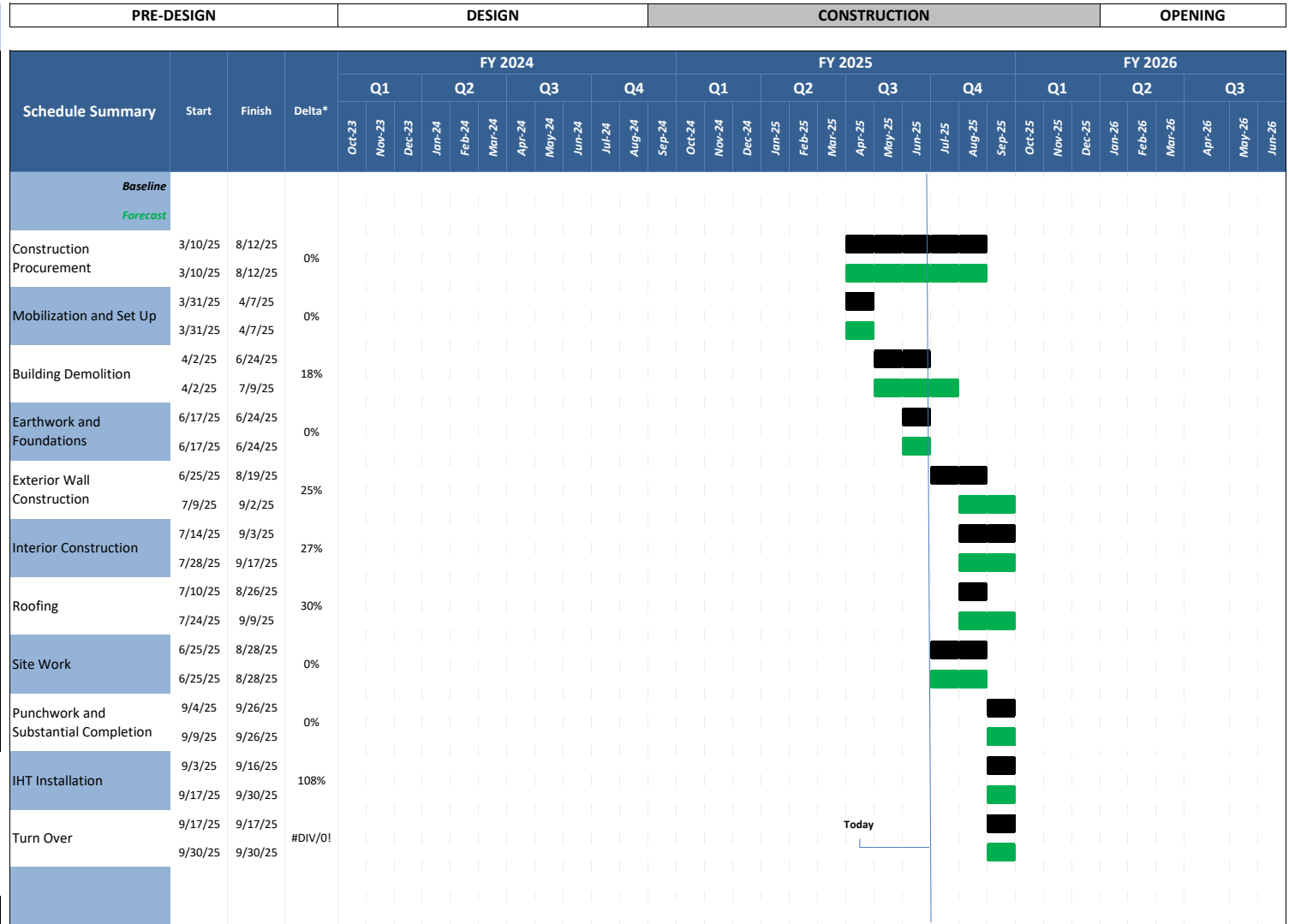
**Overall Status:**

|                       |   |  |
|-----------------------|---|--|
| Schedule              | G | The project is on schedule   |
| Cost                  | G | The project is forecasted to be completed on budget                                |
| Risk                  | G | See "Issues and Risks" log below   |
| Contingency Remaining | G | The current contingency needed is anticipated to exceed the \$163,649 by \$18,057. |

**Design & Construction**

| STATUS                | Strata Budgeted     | Forecast            | Variance (\$ & %) |           | Prior Month Var. | Actuals           | Committed           |
|-----------------------|---------------------|---------------------|-------------------|-----------|------------------|-------------------|---------------------|
| Design & Construction | \$ 3,272,973        | \$ 3,320,713        | \$ 47,740         | 1%        | \$ -             | \$ 183,761        | \$ 3,318,801        |
| FFE / Art             | \$ 25,000           | \$ 25,000           | \$ -              | 0%        | \$ -             | \$ -              | \$ -                |
| IHT                   | \$ 200,000          | \$ 200,000          | \$ -              | 0%        | \$ -             | \$ 66,571         | \$ 80,444           |
| Medical Equipment     | \$ -                | \$ -                | \$ -              | #DIV/0!   | \$ -             | \$ -              | \$ -                |
| Contingency           | \$ 163,649          | \$ 181,706          | \$ (18,057)       |           | \$ -             | \$ -              | \$ -                |
| <b>Totals</b>         | <b>\$ 3,661,622</b> | <b>\$ 3,727,419</b> | <b>\$ 65,797</b>  | <b>0%</b> | <b>\$ -</b>      | <b>\$ 250,332</b> | <b>\$ 3,399,245</b> |
| Actual FY 24 Spend    | \$ -                | \$ -                | \$ -              | #DIV/0!   |                  |                   |                     |
| Capital FY 25 Spend   | \$ 3,242,960        | \$ 3,242,960        | \$ -              | 0%        |                  |                   |                     |
| Capital FY 26 Spend   | \$ 418,662          | \$ 484,459          | \$ 65,797         | 1%        |                  |                   |                     |
| Capital FY 27 Spend   | \$ -                | \$ -                | \$ -              | #DIV/0!   | \$ -             |                   |                     |

**Cost Variance Commentary:**  
- A portion of the construction contingency was utilized to cover the cost of abatement, testing and inspection services and permits  
- \$100,000 has been added as a pending change order (estimate only) to reflect the recommendation to expand the number of parking stalls



\* Schedule deltas represent the percentage of slippage from the original scheduled duration (Forecast Finish - Baseline Finish) / (Baseline Finish - Baseline Start)

**Schedule Variance Commentary:**  
- Due to a delay with the haul off of 50's wing debris, turnover was pushed to the end of September (09/30)

| Key Accomplishments Prior Month  | 30-day Look Ahead  | Decisions Requested            |
|--|--|--------------------------------|
| <ul style="list-style-type: none"> <li>The demolition of the 50's wing was completed.</li> <li>It was discovered that the wrong sewer was capped off; this will be fixed 07/06 and 07/07</li> <li>Asbestos remediation activities were completed.</li> </ul> | <ul style="list-style-type: none"> <li>Haul off of the 50's wing debris will be completed. Unfortunately, the McCall landfill does not allow the large trucks on their site, extending the time needed to remove the debris.</li> <li>Exterior wall construction will begin in mid-July</li> <li>Interior construction activities will begin near the end of July</li> </ul> | <sup>1)</sup><br><sup>2)</sup> |

| Issues & Risks (all High & Medium risks from Risk Register) |   |             |                       |
|---|---|-------------|-----------------------|
| Risk  | Update  | Probability | Impact: Cost or Delay |
| 1   | The unpredictable McCall weather will continue to be a risk to the project schedule | 50%         | Delay / Cost          |
| 2   | May need to push parking lot paving and landscaping to Spring of 26                 | 50%         |                       |
| 0   |   | 0%          |                       |
| 0   |   | 0%          |                       |
| 0   |   | 0%          |                       |
| 0   |   | 0%          |                       |
| 0   |   | 0%          |                       |
| 0   |   | 0%          |                       |
| 0   |   | 0%          |                       |
| Other Issues:   |   |             |                       |

**Status Key:**

| Color | Cost             | Schedule                |
|-------|------------------|-------------------------|
| Green | +/- 5% of budget | On-time / ahead         |
| Amber | 5-10% variance   | Delay <10 days baseline |
| Red   | 10+% variance    | Delay >10 days baseline |







# Finance Report

*McCall Memorial Hospital District Board Meeting*

July 15, 2025





# McCall Taxing District Project Tracking

As of May 2025 Close

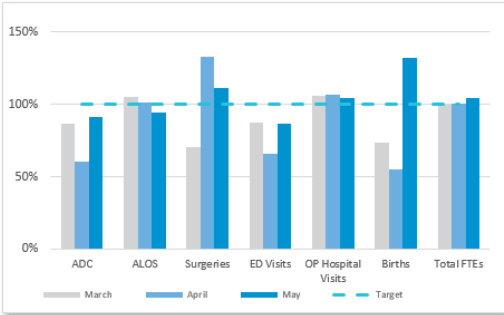
| Project Name   | Original Quote   | Prior Year       | Year Total     | FY25 Forecast    | Carryover from<br>Prior Year | Current Year<br>Taxing District<br>Reimbursement | Anticipated<br>Carryover |
|--|------------------|------------------|----------------|------------------|------------------------------|--|--------------------------|
| 16.995.1401 - McCall Urgent Care (MMHD Funded)                     | 2,113,336        | 2,649,751        | 121,735        | 129,955          |                              |  |                          |
| 16.267.1371 - McCall Allen Nokes Parking Lot Improvements          | 542,223          | 498,495          | 88,037         | 88,037           |                              |  |                          |
| 16.145.1193 - MCCALL ASL AMBULANCE GARAGE - Taxing District Funded | 1,300,000        | 112,424          | 260,409        | 1,638,000        |                              |  |                          |
| <b>Total Spend</b>   | <b>3,955,559</b> | <b>3,260,670</b> | <b>470,181</b> | <b>1,855,992</b> | <b>1,187,576</b>             | <b>1,300,000</b>                                 | <b>(631,584)</b>         |

# St. Luke's McCall Financial Performance Highlights — May 2025

## KEY MESSAGE:

May represents the second month of the third quarter of the fiscal year. Entering FY25 assumptions built into the target include continued decreases in traveler usage, inflationary adjustments, as well as impacts to 340B.

Our clinical quality, throughput, and access to care all impact our financial performance. In the short term we will continue to monitor our financial performance closely in order to inform an operational response and continuous improvement. McCall is currently forecasted to miss target for the year.



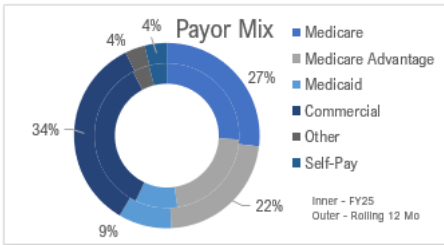
**Operating Indicators:** Variances to target were in line with typical seasonal activity but were also affected by unique operational challenges and special community needs. Relative to May:

- Average Daily Census was 4.41, below target for the month.
- Surgical cases at 84 for May.
  - 39 Cataract Procedures and 25 Ortho Surgeries were completed in May.
  - Endo completed 73 procedures for the month.
- ED visits at 14 per day, under target for the month due to seasonality.
- OP Hospital Visits are above target for the month at 68 per day.
- Births increased to 14 in May.

**Capital Purchases:** FY25 SLHS funded capital purchases have been prioritized to maintain safety standards, meet regulations, and respond to operational and plant needs.

- Imaging Mobile C Arm
- Women's Infant Hearing Screener with Cart
- Lab ABL90 Flex Plus Analyzer

| Capital              | FY25                |
|----------------------|---------------------|
| Routine              | 400,218             |
| Expansion Project    | 4,250,000           |
| Taxing District      | 1,300,000           |
| <b>Total Capital</b> | <b>\$ 5,950,218</b> |

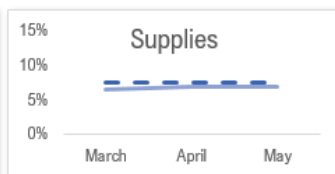


**Payor Mix:** FY25 has seen a decrease in Governmental payers shifting toward Commercial and Other/Self Pay payors.

- Government payors account for 57.1% of payors in FY25, a decrease compared to the rolling 12-month average.
- Commercial payors account for 35.1% of Payor Mix for FY25, up compared to the rolling 12 month average.
- Other & Self Pay is up compared to the rolling 12 month average, 7.8% of overall Payor Mix in FY25.

**Trended Financial Performance:** Total YTD Adjusted Operating Expenses<sup>1</sup> as a % of YTD Adjusted Operating Revenue<sup>1</sup> is at 75% vs. a target of 73%. Expenses were higher in May due to increased drug spend, labor costs related to PTO, and professional fees.

- YTD May Labor expense as a percentage of Adjusted Operating Revenue<sup>1</sup> is higher than target. The increase was driven by higher volumes in the Lab, Med Surg, and Women's Services.
- YTD Supply expenses through May are under target as a percentage of Adjusted Operating Revenue<sup>1</sup>. This was due to lower spending on lab reagents, minor equipment, and ortho implants, partially offset by an increase in instrument spending.
- Drug expense YTD as a percentage of Adjusted Operating Revenue<sup>1</sup> is slightly below target for the month. During the month, McCall experienced a decrease in spending on IV solutions, partially offset by an increase in drugs used to treat multiple sclerosis.
- Other Expenses YTD as a percentage of Adjusted Operating Revenue<sup>1</sup> were above target in May due to increased professional fees. This was partially offset by lower fuel and oil heating costs due to seasonality.



<sup>1</sup>Adjusted Operating EBIDA" reports SLHS normal operations, before out-of-the-ordinary impacts.

# SLM COO/CNO Update

*McCall Memorial Hospital District*

July 15, 2025



# McCall Updates

## Culture/Workforce Innovation

- ✓ *Staffing*
- ✓ *Housing*

## Access

- ✓ *New Services*
- ✓ *New Providers*
- ✓ *Construction Updates*

## Safety & Quality

- ✓ *Quality Scores*



# PHA-1 McCall Quality Metric Overview

| Metric   | Assessment | Key Trends   |
|--|------------|--|
| SSE Falls  | Green      | Sustaining. No falls reaching the level of serious safety event this fiscal year.            |
| DART: Employee Injury  | Green      | Rolling 12 month DART rate 3.84. FY25 goal 12.29   |
| SSI: Knee Prosthesis, Fracture, Hip Prosthesis, Appendectomy, C-section, Cholecystectomy | Green      | Sustaining zero SSI's for rolling 12-month for these SSI categories                          |
| SSI: Breast  | Green      | Zero Breast SSI for rolling 12 months  |
| SSI: Hernia  | Green      | 1 Hernia SSI in November 2023  |
| BCMA: Med Safety   | Green      | Above goal for year  |
| Mortality  | Green      | 4 over last rolling 12 months. Risk-adjusted above expected mortality, sepsis-related death. |
| Care Experience: LTR Patient Care Services   | Green      | Above goal for fiscal year.  |
| Care Experience: LTR ED  | Red        | Below goal for May, above goal for fiscal year.  |
| Hand Hygiene   | Green      | Sustaining above goal  |